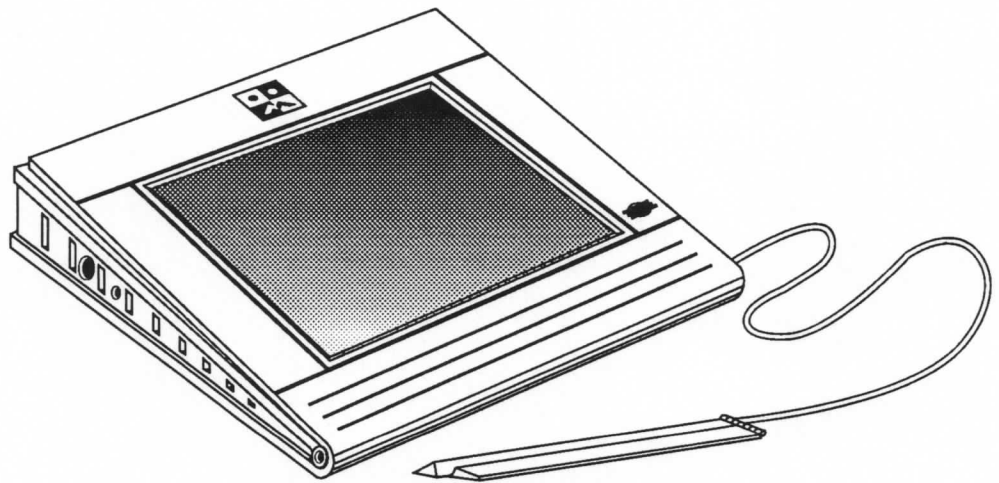


A

WEEK

IN THE LIFE:

The Momenta Computer in Action



A WEEK IN THE LIFE:

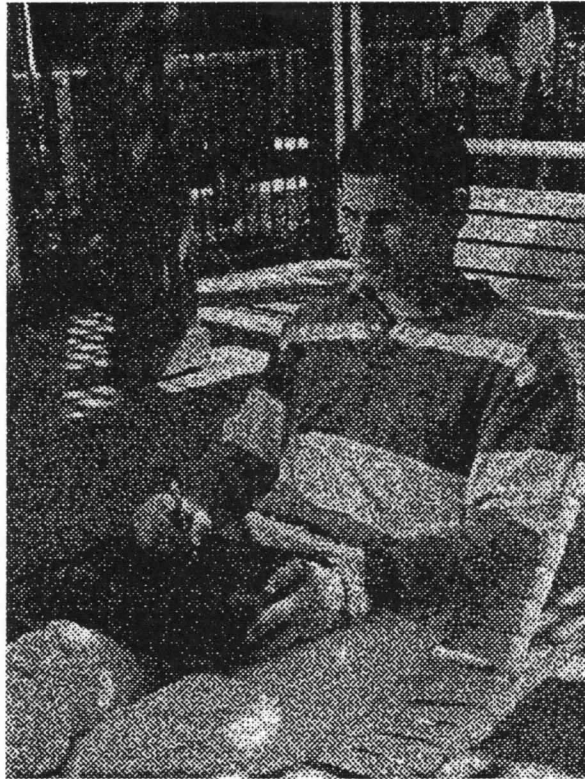
THE MOMENTA COMPUTER IN ACTION

The Momenta Computer goes where conventional computers fear to tread and does things they can't do. It brings computing power to a much wider range of environments and endeavors. The phrase that sums it up best is "anywhere, anytime."

The "Momenta" is a conventional MS-DOS laptop computer, using an attachable keyboard and running standard programs. But it is also a pen-based computer, whose electronic pen enables it to function in settings where keyboard computers would be inappropriate or clumsy. This fusion of two computers is what makes the Momenta a pentop computer. And it's a mobile office, too—a personal organizer, notepad, address book, calculator, file cabinet and fax machine rolled into one.

But mere descriptions don't quite do it justice. The computer's real value becomes clear when you consider it in context, in the hands of a user. To tell that story, Momenta offers the following vignette, called "A Week in the Life." It chronicles a few days in the life of a hypothetical Momenta Computer user—with you, the reader, stepping into the role of user.

Imagine you're a business consultant, a partner in, say, a 100-person firm. (Though you could just as easily be an executive, a journalist, a salesman or accountant. Scenarios like the one that follows could be applied to hundreds of professions.) Business is booming. You've just landed a lucrative new account, a major manufacturer of packaged goods. The client is about to introduce a new product, and you're helping to chart the strategy. Your story opens on Sunday....



S U N D A Y . You're outside on your patio, catching some mid-morning sun. The Sunday paper's by your side. And on your lap is your Momenta Computer.

You're collecting your thoughts and preparing for the week ahead. The Momenta is your scratchpad, your planner, your notebook. No need for a keyboard—the electronic pen controls the system and enters information, writing directly on the screen.

A tap of the pen on the screen brings the machine to life, and a second tap opens your to-do list. You work your way down the list, deleting with a pen-stroke the actions you've completed so far. At the end, one item remains, and it's a biggie. Last Friday you got the heart-stopping news that your client is moving up his product intro date by one *full month*, on rumors that a competitor is plotting a preemptive strike. This means your carefully laid-out marketing program—your publicity campaign, your production timetables, your packaging scheme—will have to be completely reworked, preferably yesterday. (Hence this Sunday brainstorming session.)

Your electronic calendar—opened, naturally, with a pen-tap—shows just how tight the timing is. You'll be flying to the client site on Wednesday (he's on the West Coast, you're on the East) and presenting the new marketing plan on Thursday. That leaves only a couple of days to rethink your entire strategy.

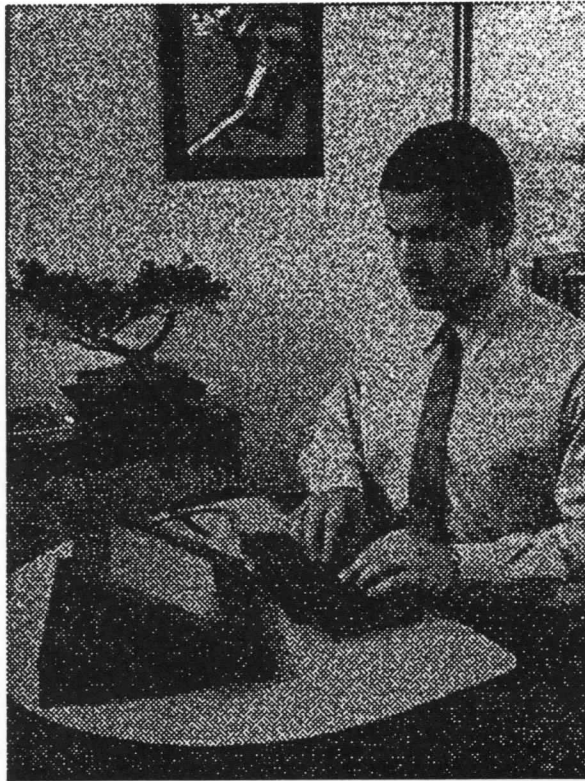
Using the Momenta's search and retrieval functions, you call up the latest drafts of your planning documents and, with the pen, highlight the areas in need of revamping. You circle paragraphs and scribble comments using the computer's mark-up function.

Now it's time to compose an action plan. You open your computerized journal, which allows you to pen freehand text and edit what you write using functions such as cut and paste. You create a list of action items—"get new cost estimates," "move up production schedules," etc.—and detail the steps needed to accomplish them. You add, delete and shuffle the text around until finally you have a prioritized outline of the project.

End of phase one. You set the computer aside and turn to more recreational diversions, like tending your garden.

F e a t u r e s

- Small and lightweight: the size of a three-ring binder and just under six pounds.
- High-quality liquid crystal display (LCD) screen.
- Pen works directly on screen, for information capture, command and control.
- Pen-based operation provides greater physical freedom than keyboard; no need for a horizontal work surface.
- Programs and accessories such as calendars and journal included with system.
- Roomy built-in hard disk stores tens of thousands of pages.



M O N D A Y you're in the office. You're seated in front of your desktop PC, which looks a lot like your Momenta Computer. In fact, it *is* your Momenta Computer, with the keyboard connected and the screen tilted up. A mouse is attached, as is a floppy disk drive. You're running standard MS-DOS programs—WordPerfect and Lotus 1-2-3.

Working from the freehand outline you developed yesterday, you're typing a lengthy memo to your product marketing team. It lists the challenges posed by the new launch schedule and describes some possible courses of action. For instance, there's the problem of jump-starting consumer awareness in time for the rollout. You suggest a series of television spots and a direct mail blitz. And there's the question of how the tighter timelines will affect the publicity and production budgets. By way of an answer, you retrieve some cost data from a floppy disk, load it into your Lotus spreadsheet and massage the numbers to

reflect the impact of rush charges, overtime pay and other factors. You include the revised estimates in your memo.

After a quick proofread and edit, you circulate the report via electronic mail. You'll go over it with your associates tomorrow.

A large, stylized, white letter 'F' is set against a black background. The letter has a decorative, brush-like texture and a small 'e' is positioned to its right.

a t u r e s

- Full MS-DOS compatibility.
- 386SX microprocessor.
- Attachable IBM-compatible keyboard.
- Optional mouse.
- External floppy disk drive.



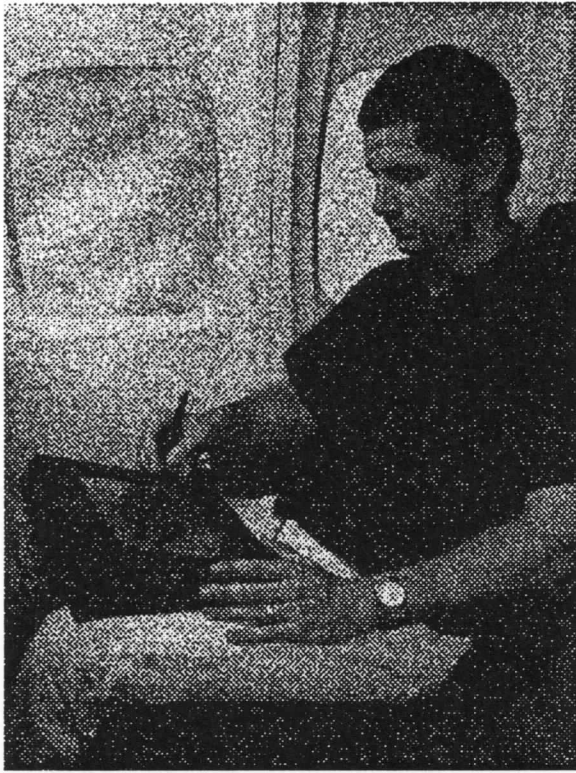
T U E S D A Y you're huddling with other members of the project team, hashing out details of the new marketing plan.

Naturally, your Momenta is there. You're using it to take notes and sketch flowcharts showing project members and their assignments. Later you'll file the documents on the hard disk, tagging them with some key words ("mkting meeting, intro plan, assignments") so they'll be easy to find in the future. The value of this last feature is made manifest when, in the course of the discussion, questions are raised about some market research quoted in a previous meeting. The person who originally reported the findings is home sick, and no one can recall exactly what she said. No problem. Your minutes from that meeting are stored on your Momenta. You run a key word search ("mkting meeting, re-search, 1-20-91"), retrieve the notes and resolve the matter then and there.

Before adjourning, the group decides to set up regular Tuesday sessions to track the progress of the introduction. You open your electronic calendar, pen in the meeting and choose a "recurring appointment" option. The Momenta automatically schedules meetings for every Tuesday at 4:00 PM.

F e a t u r e s

- Pen-based operation appropriate in meetings and other face-to-face situations.
- Anywhere, anytime access to vital information.
- Electronic calendar that can be with you at all times.
- Easy freehand note-taking and drawing.
- Notes can be retrieved by title, date and time of creation or key words.
- Cuts down on paper and clutter.



W E D N E S D A Y finds you somewhere over the Midwest, en route to L.A., where you'll be making your pitch to the client.

Displayed on your Momenta is a presentation of your new marketing plan, replete with splashy visuals, copious data and (you hope) convincing arguments. You and your colleagues toiled long into the night to complete the job, and it's not half bad. Now you're giving the draft a read-through, rehearsing your lines and scouting for typos. Right off, you spot a howler: the client's name, misspelled on the opening foil. You fix this and other glitches and tidy up the graphics, using Momenta's pen-based presentation maker. The program takes freehand pen input and turns it into presentation-quality images. Your hand-printed captions become formal typescript, and your crude sketches are converted into neat diagrams. All that's missing from the draft now are some updated packaging cost estimates. They're being worked out by your graphic designer, who'll fax them to you when you get to your hotel.

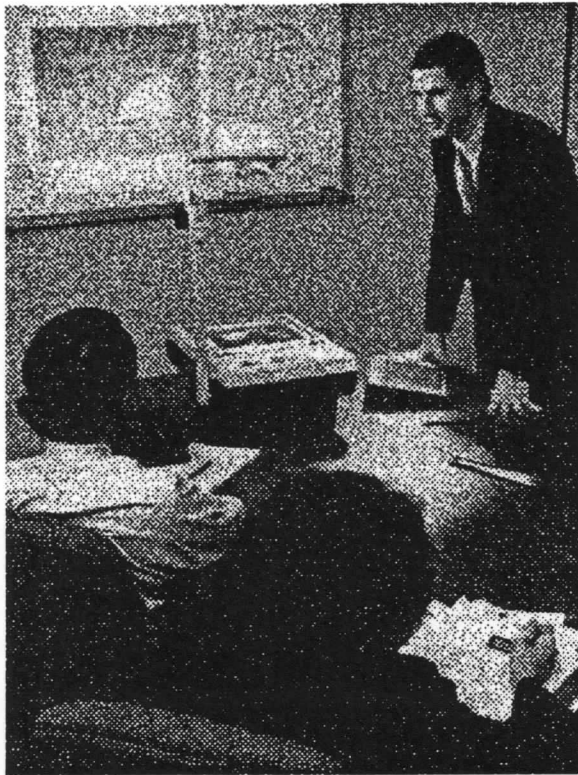
You also make some edits to a planning report, using WordPerfect in the Momenta's pen-only mode. The program runs exactly as it does on a conventional computer, except that the pen is used in place of mouse and keyboard. The pen enters data by tapping a "virtual keyboard" displayed on the screen and chooses commands from menus in the fashion of a mouse. The pen is actually a better mouse, as explained in the box below. The computer automatically switches into pen-only mode whenever the keyboard is detached.

You arrive at last at LAX and catch a cab to the Sheraton. After settling in, you touch base with the home office. You connect the Momenta to a telephone wall jack, dial into your e-mail network, field some messages and fire off a few of your own. Before going to bed, you plug your Momenta into the wall to recharge. (The machine is still going strong, thanks to its long battery life, but you want it to be ready for another long day tomorrow.)



a t u r e s

- Presentation maker enables the creation and editing of high-quality presentations using the pen.
- The pen is an ideal pointing device for LCD-based portable computers. A mouse performs poorly with an LCD because the screen causes the mouse-driven cursor to disappear, or "submarine," in transit. The pen, on the other hand, works directly on the screen and has no need for a moving cursor, thus eliminating the submarining problem.
- Standard, off-the-shelf DOS programs run in pen-only mode whenever keyboard is disconnected.
- Energy-saving power management system extends battery life beyond current laptops.
- Built-in modem for data communications and e-mail.
- Fast charge mechanism replenishes batteries in 1-1/2 hours or less.



T H U R S D A Y is presentation day. This project is the first big challenge you've faced with this client, and a good showing could mean a lot more business for your consultancy. Fortunately, the presentation is polished and ready to go.

Well, almost ready. You completely forgot to connect with your design firm on those cost updates, and by the time you remember, you're sitting in the back of a taxi on your way to the client offices. Not to worry. You plug your Momenta into your portable phone, look up the design firm's phone number in your electronic address book, call them and ask them to fax the data directly to your computer. In short order the figures pop up on the computer's screen. You work them into a chart with the Momenta's pen-based chart maker, and you're done. When you get to the client's office, you connect your Momenta to a desktop computer or a fax machine and print out overhead transparencies of the presentation on a laser printer.

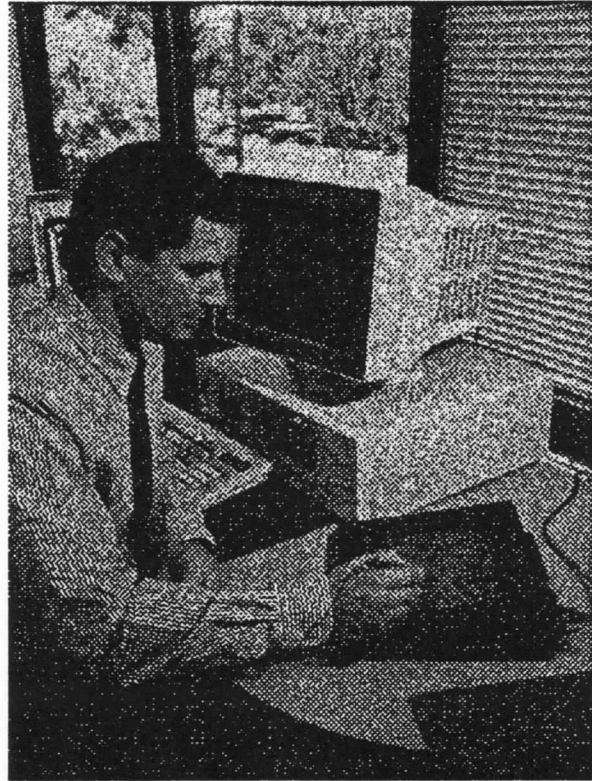
It's showtime, and things are going swimmingly. You're about half an hour into your presentation, with nary a discouraging word from your audience (a VP of marketing and assorted product managers). Then you get a surprise. The CEO of the client company has decided to drop in. Seems he's taken a special interest in the project and wants to do some hands-on managing. Right away he starts asking some pointed questions. Why, he wants to know, aren't you going with a manufacturing subcontractor in order to ramp up production as quickly as possible? Too expensive, you explain, and unnecessary, since the client has a new plant that can do the job itself. By way of demonstration, you pull up a spreadsheet on your Momenta and show him a cost analysis you worked out earlier. Well, he wonders, will the new plant manager be able to get his production lines moving soon enough? Yes, you answer, and display on your Momenta a production schedule faxed to you by the plant manager.

It goes on like this for a while, till at last you've laid all questions to rest. The CEO is duly impressed. He smiles, pumps your hand and praises your work. He also makes a handsome offer on your Momenta. You politely decline.



f e a t u r e s

- Electronic address book with automated search and sort functions.
- Built-in fax capability.
- "SmartCable" enables wireless communications by attaching Momenta to leading cellular phones.
- Chart maker program enables creation of charts and graphs with the pen.
- Momenta can print via connection to PC, to network or directly to printer. Or it can produce hard copy through a fax machine at 200dpi, if no printer is available.



F R I D A Y afternoon you're back at the office, wrapping up the week's work.

You connect your Momenta to your local network and back up the contents of your hard disk to a network server. You also replace earlier drafts of your marketing documents, stored in a shared file on the server, with the current versions you touched up on the road. You upload a travel expense report to your secretary's PC. It has been a successful week, and you can go home now.

You're halfway out the door when you hear a beeping coming from the vicinity of your Momenta. It's the computer reminding you that you're celebrating your anniversary tonight. On its screen flashes a message suggesting a trip to the florist. And might the machine recommend a suitable gift for your spouse? Alas, no. There are still some things you have to do on your own.

F e a t u r e s

- Connects to standard networks via compact adaptor.
- Programmable alarms.
- Elegant carrying cases.